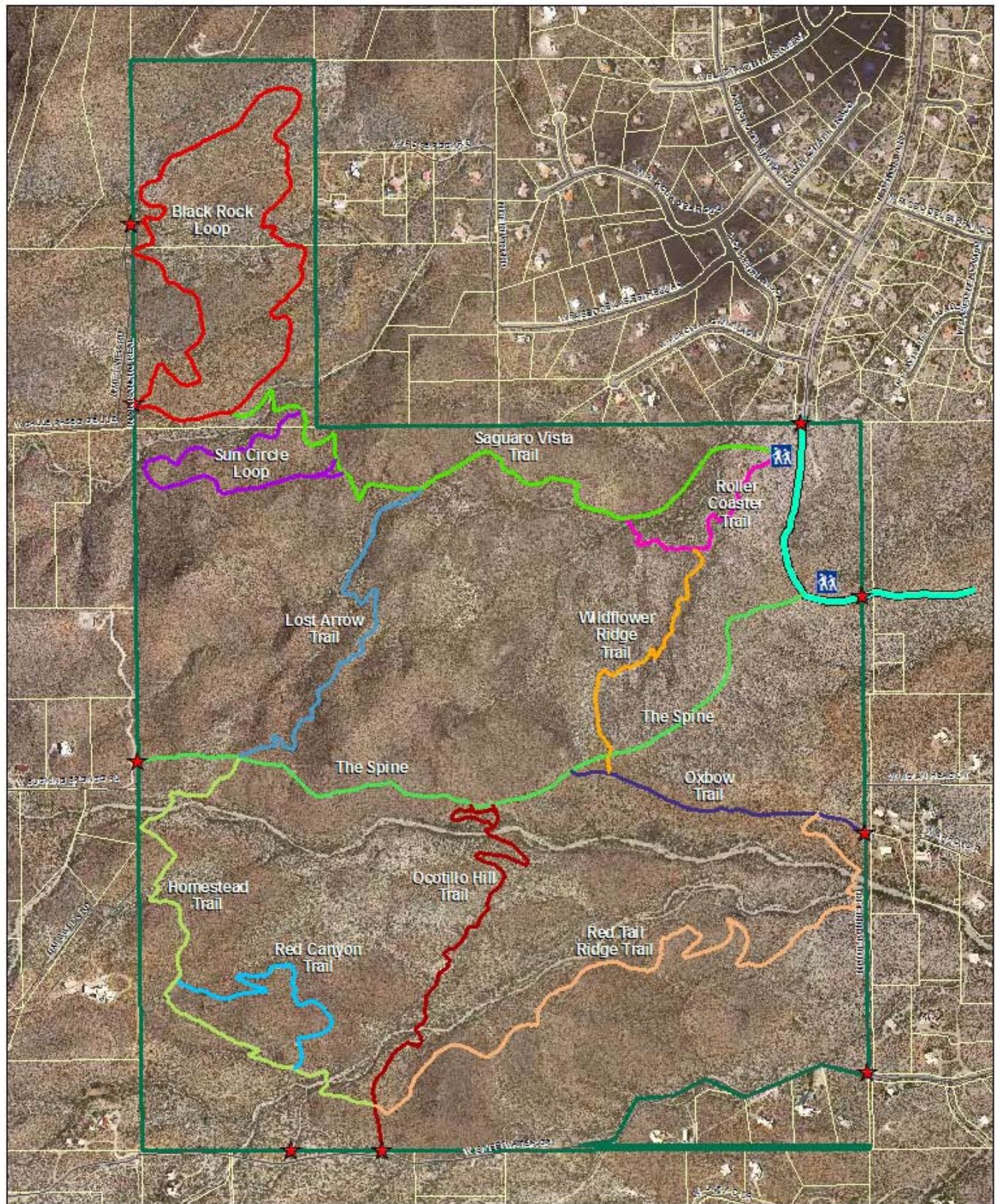


Sweetwater Trails



**SWEETWATER PRESERVE
TRAILS PARK**



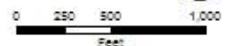
Trailhead



Boundary Access

Proposed Road

Sweetwater Preserve



Boundary Access is neighborhood access only. Parked vehicles will be towed.

Directions to Trailhead:

From I-10, take the Ruthrauff/Camino del Cerro exit and head west on Camino del Cerro. Approximately 1.5-2 miles after you cross Silverbell take a left (south) at Tortolita. Trail parking is at the end of the road, about one mile.

Please Read and Heed!

Riding these trails is a privilege, not a right. You're able to ride here because someone's letting you. Don't make them regret their decision because they could always change it.

- 1. Be nice to everyone.** Make a new friend today. You already have something in common, so say hello.
- 2. To yield is divine.** Slow down for hikers, horses and other bikers and give them all room to pass.
- 3. Stay on the trails.** Stay on the trails. Stay on the trails.
- 4. Whoa there pardner,** horses don't like surprises. Approach slowly and ask permission to pass (from the rider, dummy).
- 5. Skidmarks are for chamois.** Skidding your tires hurts our trails. Ride 'em, don't slide 'em.
- 6. Keep the neighbors happy.** Smile, wave and stay off their property.
- 7. Ride dry.** If trails are wet, wait a day.
- 8. Keep it intimate.** A group of five is big, ten is too big. Break into smaller groups.
- 9. Leave it cleaner than you found it.**
- 10. Remind other mountain bikers** when they are jeopardizing YOUR privilege to ride here.